



*The difference is in the detail...*

Proud to be part of Eden Hotel Collection



## ON BUSINESS

Whether you're after a **meeting venue**, space for **outdoor team building activities** or **private dining**, Bovey Castle has some of the finest meeting and conference facilities in the country. From stylish **contemporary boardrooms** to **event space** for up to **100 delegates**, our team are well equipped and experienced at holding corporate events. Take advantage of our wide array of **on-site activities** including **off-road driving** or **clay pigeon shooting**, before relaxing in one of our hotel bedrooms with beautiful views out onto **Dartmoor National Park**.

Imagine morning coffee served on a sunny terrace overlooking **the grounds** or watching a **live falconry display** with Bovey Castle's resident owls, falcons and eagles. It's not usually on the itinerary for a meeting or conference, but at Bovey Castle we like to offer a **unique experience**. Enjoy a round of golf on our **championship 18-hole course** or an **archery session**, before sitting down for a focused meeting and when the day's work is done, winding down with a **swim or a relaxing massage** in our spa.

In business, **first impressions count**. Start your meeting or pitch the right way by holding it at the impressive Bovey Castle. With imposing historical charm and **well-equipped meeting rooms**, we'll ensure your time with us runs smoothly allowing you to solely focus on your client or customers.



Photo credit: Graham Ashton Photography





# SPACES TO DO BUSINESS...

DARTMOOR SUITE



THE FERNWORTHY



BOVEY ROOM



THE BOWDEN



THE HAMBLEMEN



THE MULBERRY ROOM



# CAPACITIES

## CONFERENCE

MEETING ROOMS	BOARDROOM	USHAPE	CLASSROOM	CABARET	THEATRE STYLE	ROUNDS
THE DARTMOOR SUITE	50	36	50	64	100	80
THE FERNWORTHY	18	18	16	20	30	X
THE HAMBLEDEN	12	X	X	X	X	X
THE BOWDEN	14	X	X	X	X	X

## PRIVATE DINING

DINING ROOMS	BANQUET	OVAL
BOVEY ROOM	32	30
THE MULBERRY ROOM	16	14
GREAT WESTERN RESTAURANT	120	50



# DELEGATE PRICING

## DAY DELEGATE PACKAGE price from £69.00\*

- Arrival pastries
- Mid-morning treat: homemade Bovey biscuits
- Working buffet lunch- A selection of hot and cold bowl food buffet
- Afternoon pick me up with tea/coffee and cake
- Meeting room equipment: LCD display, DVD, WiFi, flip chart and air con\*\*

### Extra's/Add-on's - £7.50 each

- Bircher Muesli or Bacon Rolls
- Desserts with lunch
- Ice-cream

Minimum numbers apply.

\*Prices per person.

\*\* Dartmoor Suite A.V. additional charge.



## 24 HOUR DELEGATE PACKAGE price from £299.00\*

Includes everything in the Day Delegate Package plus dinner, bed and breakfast.

\*Prices per person. Minimum numbers apply.

## Be inspired throughout the day with a few hidden treats!

Let us know what you would like and we will aim to please.

Long trip home? Take a picnic pack along for the journey!

Prices upon request.

## THE ELITE AT BOVEY £20.00\*

Upgrade your meeting for more impact.

On arrival - Power porridge with blueberries, smoked salmon bagels, bacon rolls.

Afternoon tea - Mini sandwiches, homemade scones & clotted cream, strawberry jam.

\*Prices per person.

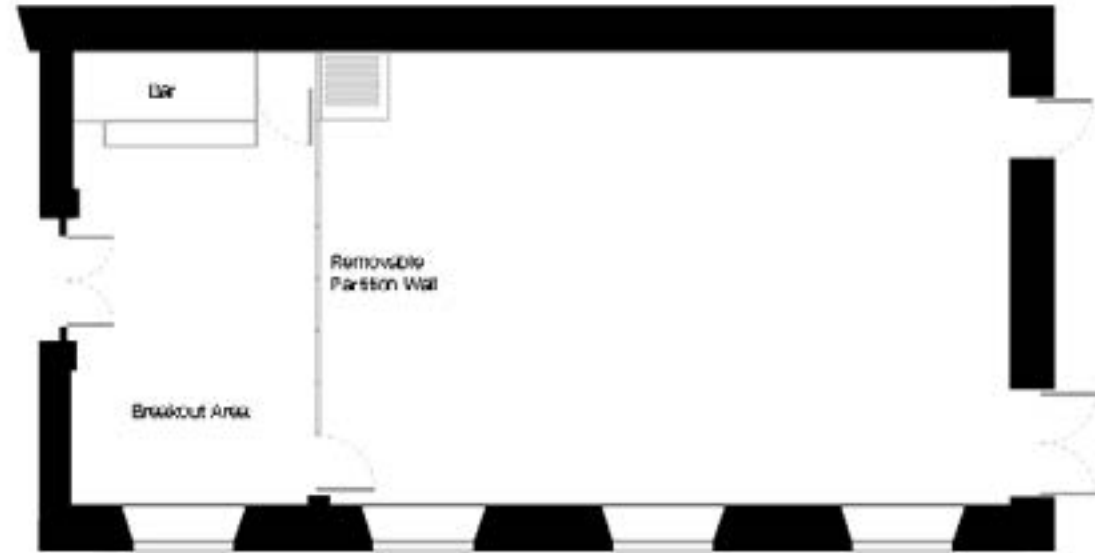


# DARTMOOR SUITE

Located in the Mews building, the Dartmoor Suite is designed for multipurpose use, whether for a meeting, conference, exhibition space or celebration.

Flooded with natural light, this room can be divided as you wish, with separate break out space as required.

Working with our trusted A.V. supplier, we can create an A.V. package specific to the needs of your event.



## FLOOR PLAN & MEETING ROOM CAPACITIES

### FACILITIES:

- WiFi
- Flip chart
- Natural light with blackout blinds
- Lighting dimmers
- Aircon

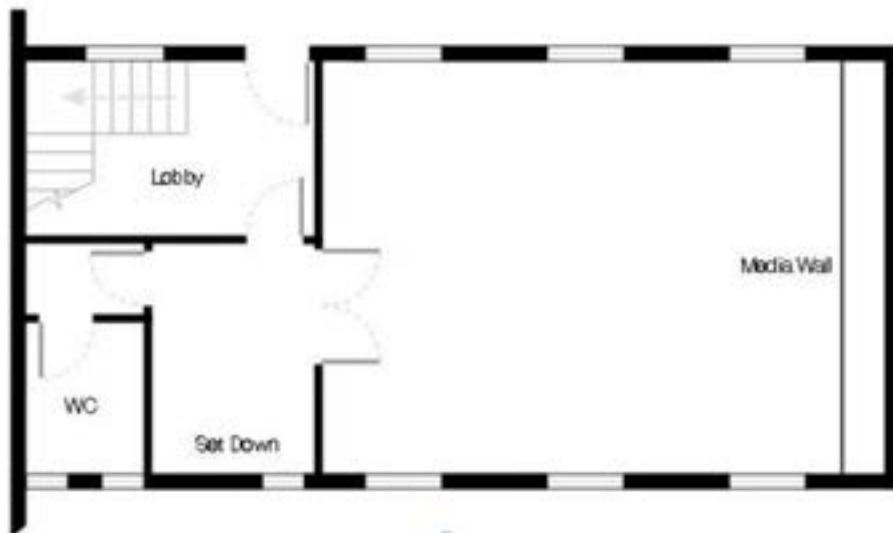
### ROOM SIZE:

18.2m long x 8.6m wide x 2.37m - 5.4m high

### CAPACITIES:

Cabaret:	64
Classroom:	50
Boardroom:	50
U-shape:	36
Theatre:	100

# THE FERNWORTHY



## FLOOR PLAN & MEETING ROOM CAPACITIES

### FACILITIES:

- 168cm LCD display, with touch screen
- PA system with roving microphones
- Wi-Fi
- Natural daylight with blackout blinds
- DVD player
- Flip charts
- Lighting dimmers
- Air conditioning

### ROOM SIZE:

7.6m long x 5.3m wide x 2.55m high

### CAPACITIES:

Cabaret:	20	U-shape:	18
Classroom:	16	Theatre:	36
Boardroom:	18		

The largest of our syndicate rooms, the Fernworthy can comfortably accommodate 30 people.

This room features integrated presentation equipment, natural daylight, and views to the rear of the mews building across the woodland.



# THE HAMBLEMEN AND BOWDEN

These 2 smaller syndicate rooms, located in the Mews building, are perfect for smaller meetings and breakout sessions or workshops.

Each comfortably seats in a boardroom style with plentiful natural daylight, air conditioning, and integrated presentation equipment.



## FLOOR PLAN &

### FACILITIES:

- 132cm LCD display with touchscreen
- WiFi
- DVD
- Flip chart

- Conference phone
- Natural light with blackout blinds
- Lighting dimmers
- Aircon

### ROOM SIZE:

Hambleton:

6.7m long x 3.5m wide x 2.7m high

Bowden:

6.7m long x 4.8m wide x 2.7m high

### CAPACITIES:

Boardroom: 12

Boardroom: 14





# PRIVATE DINING

Host your next get together in one of our exclusive private dining rooms – a perfect way to get family or friends, clients or colleagues together to celebrate in one room.

Our events team, head chef and sommelier can work alongside you to create a bespoke menu for your meal. As private dining is also an integral element of a corporate event or team building session, we can work around your schedule to offer a private dining experience for delegates. We can provide ideas for a three-course fine dining feast or scrumptious snacks on the South Terrace...the choice is yours!

## BOVEY ROOM

*Perfect for Special Occasions...*

The Bovey Room is the perfect space for celebrating special occasions with friends or family in the indulgent surrounding of your own private dining room.



## THE MULBERRY ROOM

*Perfect for Intimate Dinners...*

Complete with decadent lighting, and plush furnishings, the Mulberry Room is a great choice for intimate dinners with family, friends or colleagues.



## BOVEY ROOM

ROOM SIZE:  
11.9m long x 4.9m wide

CAPACITIES:  
Banquet: 32  
Oval: 30



## THE MULBERRY ROOM

ROOM SIZE:  
6m long x 5.4m wide

CAPACITIES:  
Banquet: 16  
Oval: 14



# Great Western Grill

*Perfect for Grand Celebrations...*

Designed in the Art Deco style, our main hotel dining room offers sophistication and style. This grand room is the perfect setting for celebrations, from award ceremonies to corporate gala dinners.

ROOM SIZE:  
20m long x 11.7m wide x 3.7m high

CAPACITIES:  
Banquet: 120  
Oval: 50





## FOOD FOR THOUGHT...





## TEAM DAYS

*Powerful impressions...*





## FIND US & STAY IN TOUCH

*We would love to do business with you...*

For a stylish and professional business and conference venue on Dartmoor, look no further than Bovey Castle. Set amidst stunning grounds in the heart of Devon, both clients and colleagues will be left inspired and amazed. What's more, we have everything you need on site so you won't need to leave the resort.



### BOVEY CASTLE

Bovey Castle  
North Bovey,  
Dartmoor National Park,  
Devon,  
TQ13 8RE

///angel.backup.riverbed

01647 445000  
[www.boveycastle.com](http://www.boveycastle.com)

### CONFERENCE AND EVENTS TEAM:

Esme Chamberlain - 01647 445098  
[events@boveycastle.com](mailto:events@boveycastle.com)

### BUSINESS DEVELOPMENT MANAGER:

Suzanne Draper - 07773 574131  
[suzanne.draper@edenhotelcollection.com](mailto:suzanne.draper@edenhotelcollection.com)